

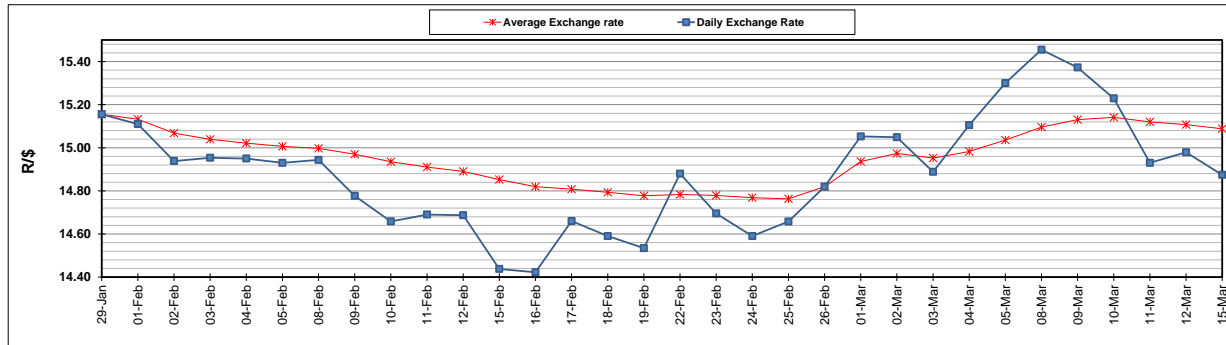
	PETROL 95 ULP	PETROL 93 ULP & LRP	DIESEL 0.05%	DIESEL 0.005%	ILL. PAR.
GAUTENG PUMP PRICE (SA c/l) AS FROM 03/03/2021	1,632.000	1,615.000	-	-	-
WHOLESALE PRICE (SA c/l) AS FROM 03/03/2021	-	-	1,412.420	1,416.820	845.688
SINGLE NATIONAL MAXIMUM RETAIL PRICE	-	-	-	-	1,071.000
BASIC FUEL PRICE - 15/03/2021 (SA c/l)	763.713	752.514	709.761	712.474	686.843
PRESS RELEASE CONTRIBUTION TO BFP 03/03/2021 - 15/03/2021 (SA c/l)	665.170	658.170	653.630	658.030	633.128
UNIT OVER/(UNDER) RECOVERY - 15/03/2021 (SA c/l)	(98.543)	(94.344)	(56.131)	(54.444)	(53.715)
AVERAGE BASIC FUEL PRICE 26/02/2021 - 15/03/2021	739.592	729.126	704.933	707.787	682.269
AVERAGE UNIT OVER/(UNDER) RECOVERY 26/02/2021 - 15/03/2021	(90.672)	(87.206)	(64.803)	(63.757)	(60.891)

ANALYSIS MOVEMENT OF AVERAGE OVER/(UNDER) RECOVERY

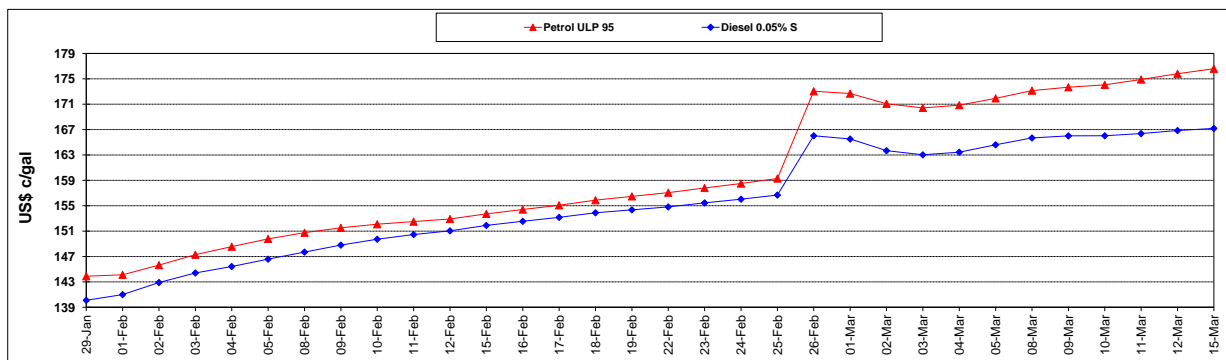
	PETROL 95	PETROL 93	DIESEL 0.05%	DIESEL 0.005%	ILL. PAR.
- MOVEMENT IN INTERNATIONAL PRODUCT PRICES	(74.751)	(71.510)	(49.628)	(48.520)	(46.204)
- MOVEMENT IN EXCHANGE RATE	(15.921)	(15.696)	(15.175)	(15.237)	(14.687)
AVERAGE UNIT OVER/(UNDER) RECOVERY 26/02/2021 - 15/03/2021	(90.672)	(87.206)	(64.803)	(63.757)	(60.891)

R/\$ EXCHANGE RATE - (R/\$14.8743 - 15/03/2021)

EXCHANGE RATE USED IN BASIC FUEL PRICE



INTERNATIONAL PRODUCT PRICES OF BASKET USED IN BASIC FUEL PRICE



BASIC FUEL PRICE IN SA CENTS PER LITRE

